



OPERATO

The Logistics Operating System



HatioLab.
Reimagining Logistics

www.hatiolab.com
www.hatio.my



OPERATO

The Logistics Operating System



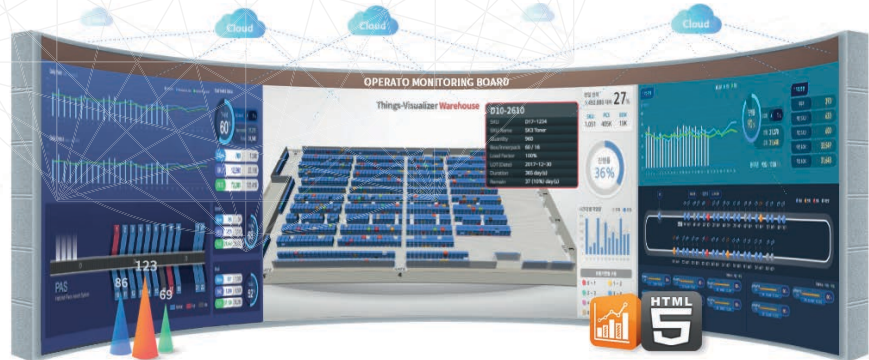
Middle Mile Logistics

Visualization
OPERATO Visualizer

Execution
OPERATO WMS

Execution
**OPERATO WCS
OPERATO ECS**

Consulting
OPERATO Expert



Picking System



Conveyor System



Sorter System



Robot System



AS/RS System



AGV System

Supply Chain
Network
Modelling

Transport
Packaging Design

Warehouse
Design & Layout

Feasibility
Studies

Process Design
& Engineering

Selection on
Best Fit IT Solution

Logistics Specialized Framework

The web-based logistics-specific framework provides classification container and facility plug-in.

Sorting Facility Integrated Operation

B2B, B2C specialized module and high-speed classification module can be provided.

Efficient resource management through WCS.

Provide Integrated Monitoring

Real-time monitoring is possible by providing web-based 2D and 3D status of distribution center facilities and warehouses.

Classification container

Provides classification API, classification module management, processing of many changing and complex processes

Facility Optimized Operation

Plug-in type facility operation, real-time order merge reduces facility idle time, increase the utilization rate.

High Flexibility

Rapid response to changing logistics environment and optimized service for each customer are available and setting profile is provided.

Shipment/Return facility control

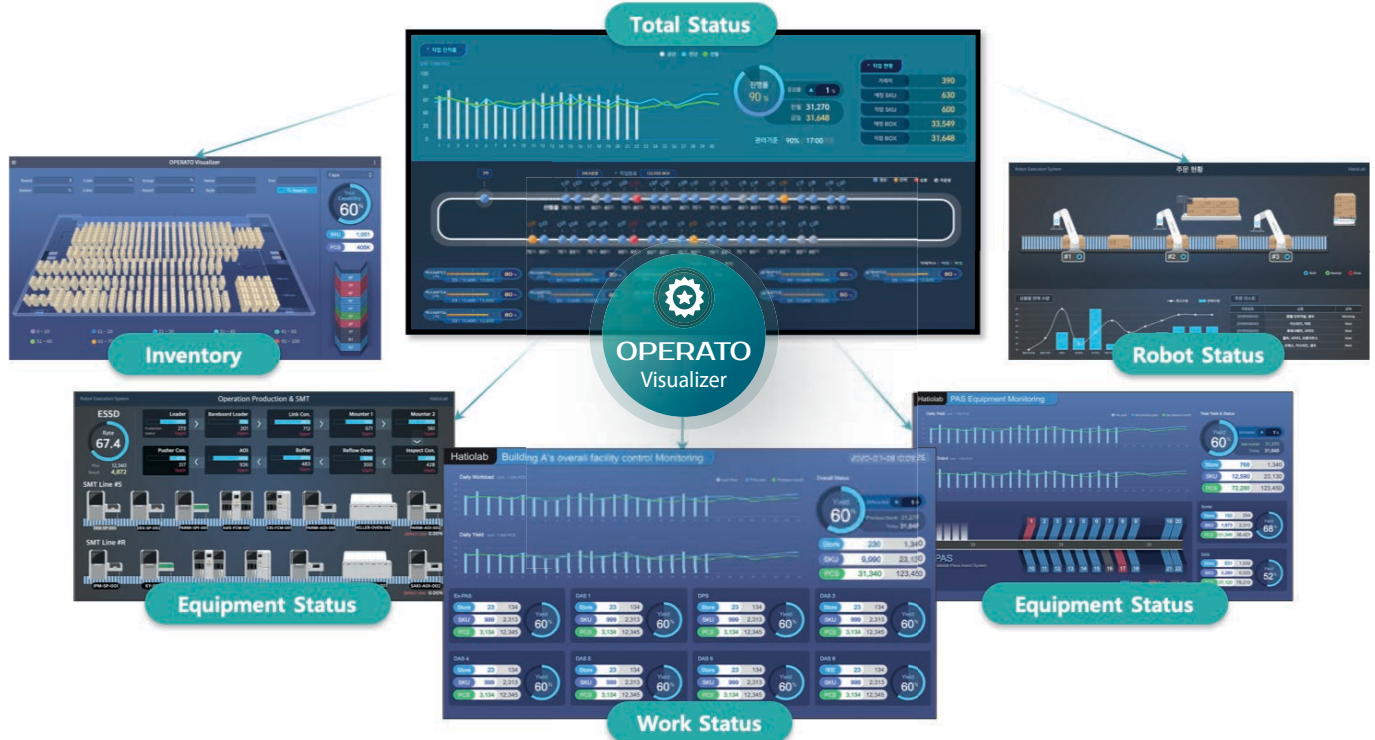
Batch merge / parallel processing / lighting when input / work method control, Shipment / Return switchable

Advanced Logistics Environment

Advanced smart logistics environment using mobile device support, Robot, AGV, IoT and cloud technology.

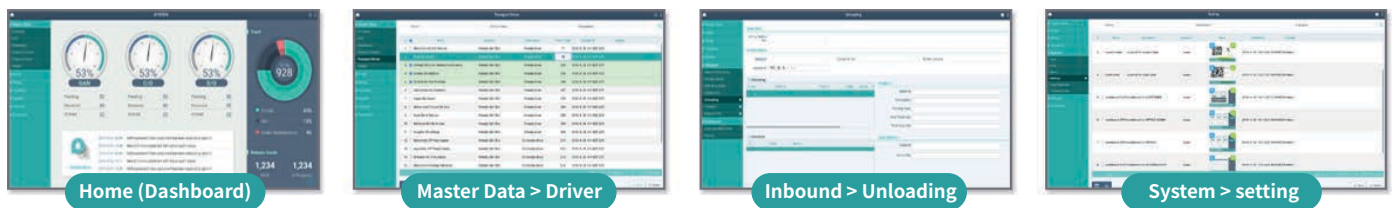
□ OPERATO VISUALIZER

- Preemptive response to issues by monitoring the real-time work status of production/logistics sites.
- Establish a visualization system for not only facility monitoring but also various logistics data.
- It visualizes complex data using an easy interface like PowerPoint without installing a separate program.



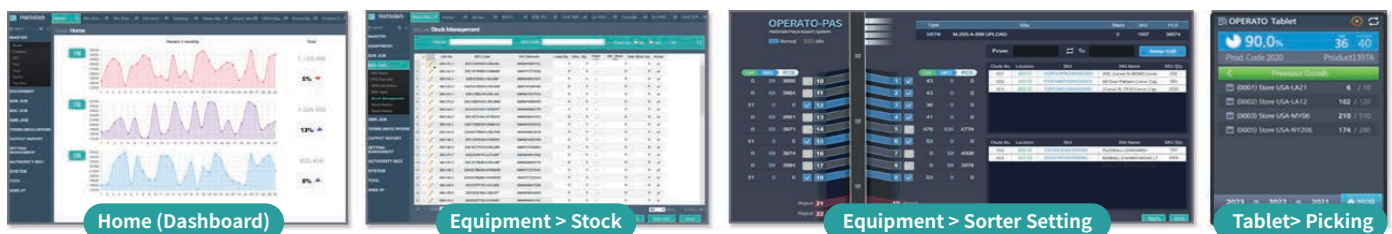
□ OPERATO WMS

- Provides logistics warehouse optimization function, traces the history from warehousing to delivery and secures workflow.
- Easily organize/manage/track distribution channels that become complex with sales products, outgoing products, set products, event products.
- Cost reduction/advancement of logistics by enabling inventory inquiry & traceability on a smart logistics system based on IoT, cloud technology.



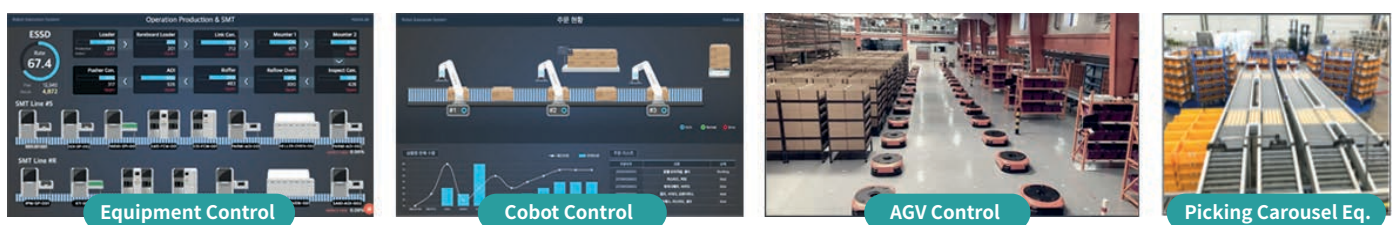
□ OPERATO WCS

- Logistics-specific framework with references from Korea's largest automated logistics company to small/medium-sized warehouses in SE-Asia.
- B2B/B2C sorting module, sorter management module, picking module, as well as mobile equipment and specialized facility control.
- Classification process that can assemble various options of equipment & indicators according to the changing logistics environment.



□ OPERATO ECS

- Logistics center automation by applying robots (Picking robot, AGV, etc.) to picking, palletizing, and transport work sites.
- By collaborating with robots, picking productivity, worker productivity, and space utilization are maximized.
- By integrating the cobot & order/inventory/process management from order to delivery & check performance against work plans.

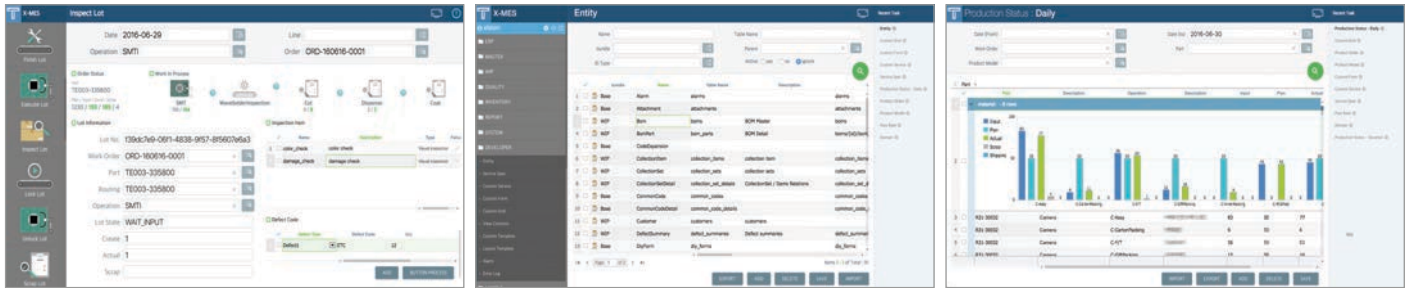


ThingsFactory

Manufacturing Execution System

A Better World by Industry 4.0, Manufacturing Innovation.

Step out of the traditional manufacturing, and get the intelligent business services with monetizing your data by getting the real-time access and intelligent control of your entire manufacturing operation



ThingsBoard

Real-time Monitoring Solution

Easy to Use, Design and Monitor Any data in Any Form.

Design dashboards, KPI reports, facility, work process, stock status, as well as the logistics, distribution and transport status by the standard, integrated graphic modeler to monitor in 2D, 3D and Map basis in real-time

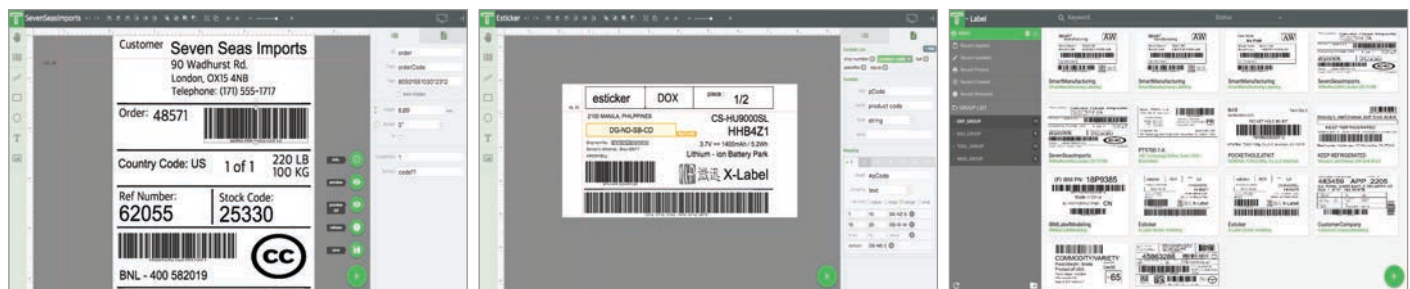


ThingsLabel

Barcode Label Management Solution

Integrated Enterprise Label Management Solution.

Easy to use solution requiring no expert to design and produce bar code labels. It supports more than 80 types bar codes including Code 11, Code 30, EAN 13, QR code and features entire enterprise label management.



HatioLab.
Reimagining Logistics

714-715, 42, Changeop-ro, Sujeong-gu, Seongnam-si,
Gyeonggi-do, Republic of Korea
TEL : +82-31-605-5571 / FAX : +82-31-605-5584
E-mail : support@hatiolab.com

38-1 Jalan Setia Utama AU U13/AU Setia Alam
40170 Shah Alam, Selangor, Malaysia
TEL : +60162842818 / www.hatio.my
E-mail : digital@hatio.my

