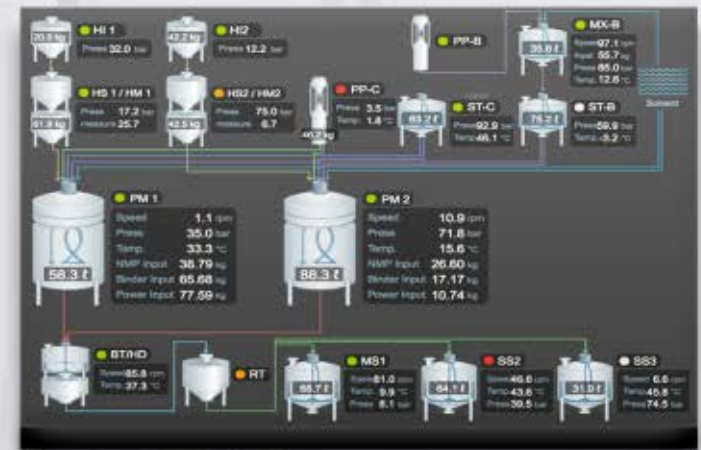
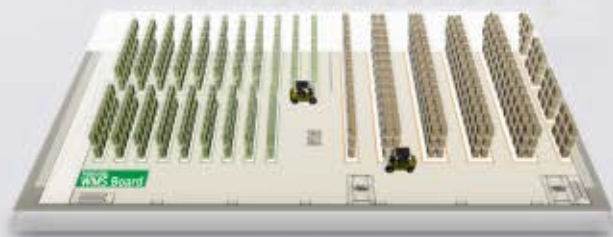


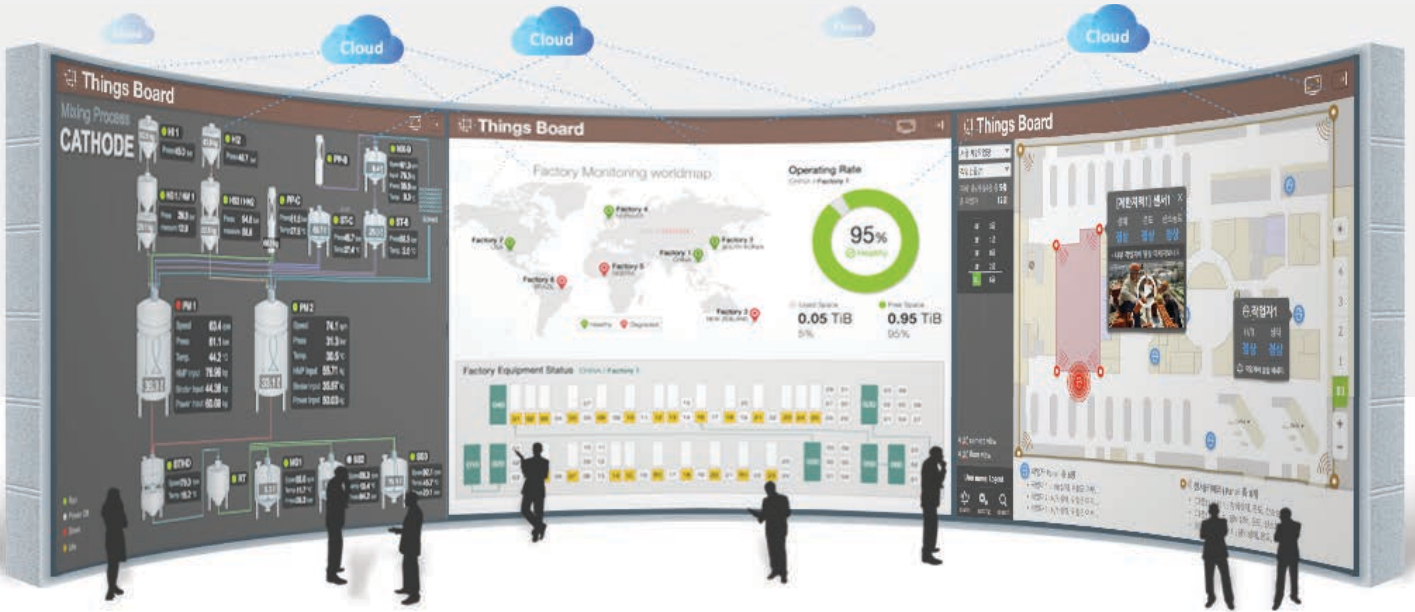
ThingsBoard



Real-time Monitoring Solution

ThingsBoard



No ActiveX! No plug-in!

Work as a web standard component in any web browser without a separate program



Easy real-time data binding

Simplified implementation of various complex data and visual components



Provide play mode

Split / integrate the designed screens as you like and provide them with animation effects



Powerful chart function

Implement reports by using complex / various charts



Support 2D / 3D / Map component

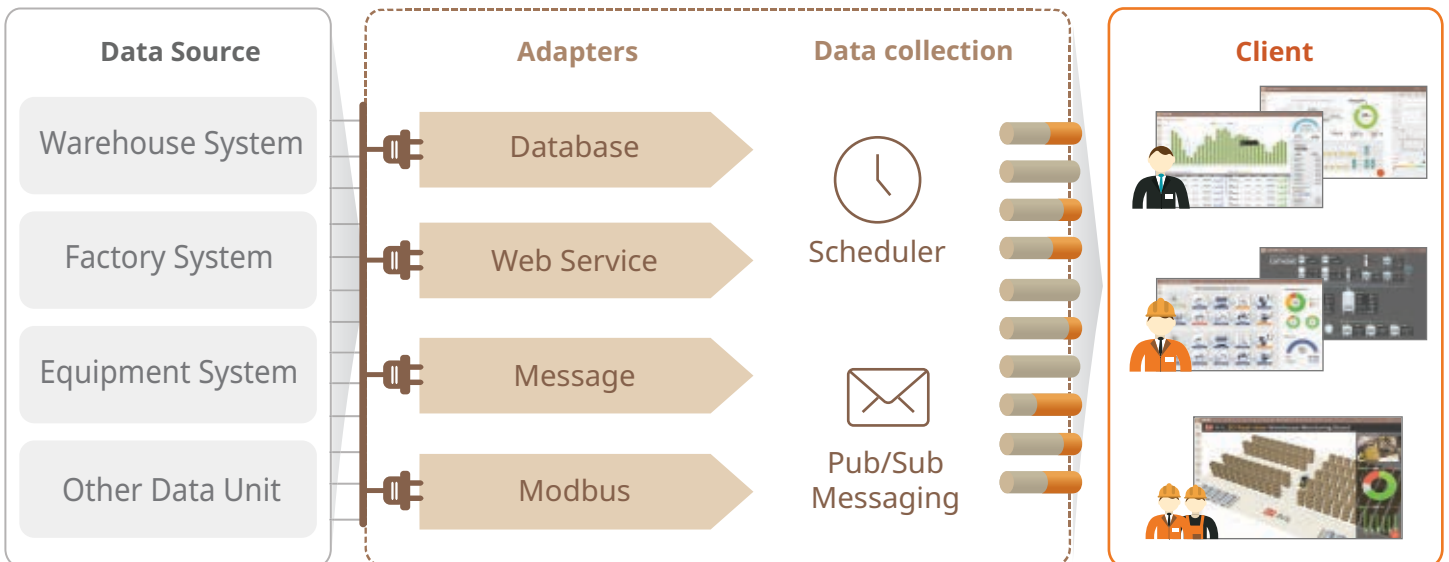
Provide basic figure, autonomic figure, 3D model, map linkage, etc.



Compatible with various devices

Enable Monitoring in PC, mobile and other devices at anytime and anywhere

ThingsBoard Architecture



Any data can be easily designed and monitored in various forms.

You can design Dashboard, KPI report, facility /inventory status, logistics / distribution / transportation status with web standard graphic integration modeler and monitor through 2D, 3D and map-based services in real-time.

Let's wake the sleeping data up!

Any Where! Any Time! Any Device!



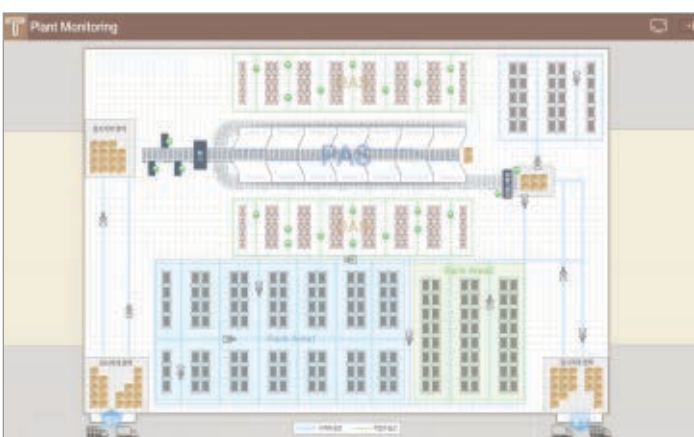
Graphical Modeling Interfaces and Components



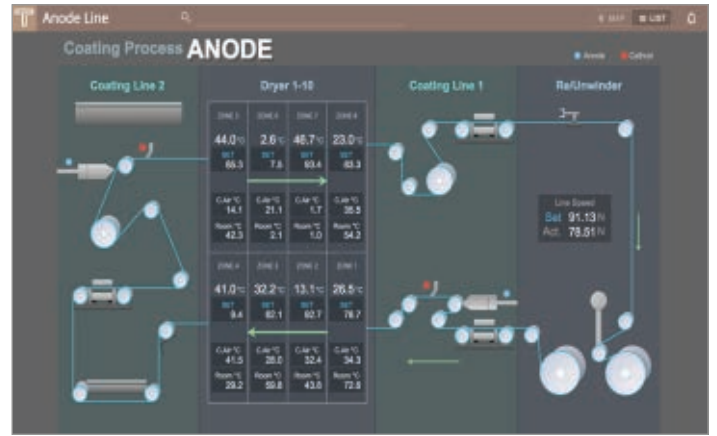
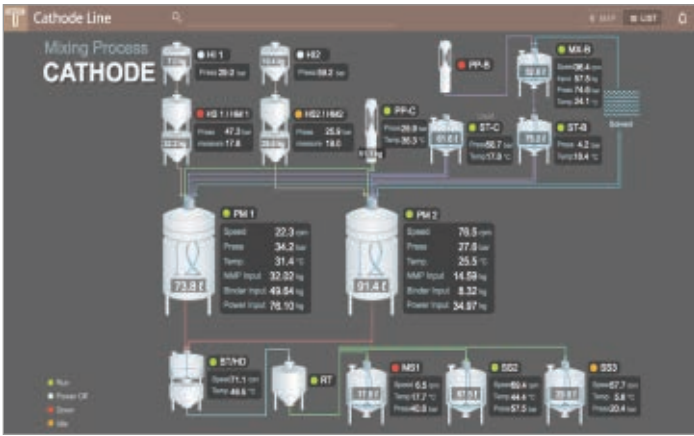
Examples of Complex Reports



Examples of Inventory Status and Equipment Monitoring



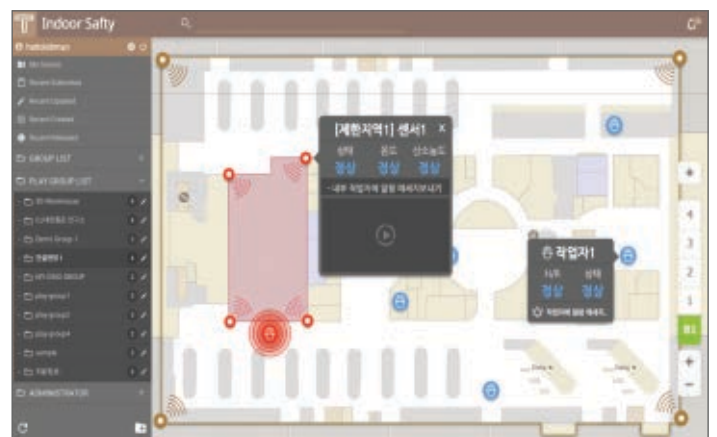
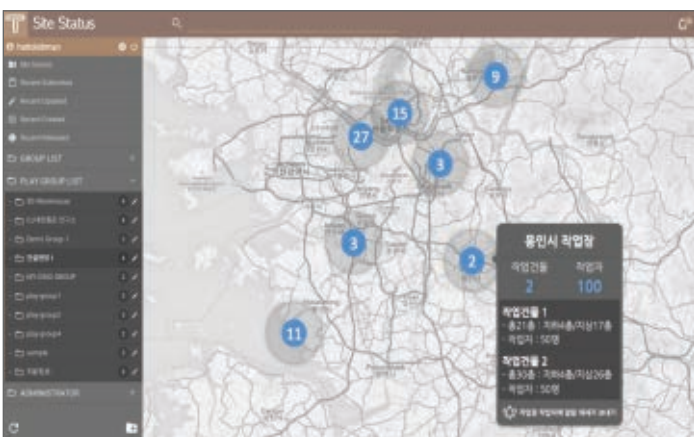
Examples of Production Line Monitoring



Examples of Inventory Status and Store Configuration 3D Monitoring



Examples of Location-based and Dynamic Object Location Monitoring



ThingsLabel
Design and print the barcode label easily
Ultimate enterprise label management

Dataludi
High-speed rendering, multi-sorting, built-in charts..
Web data grid as excellent as Excel