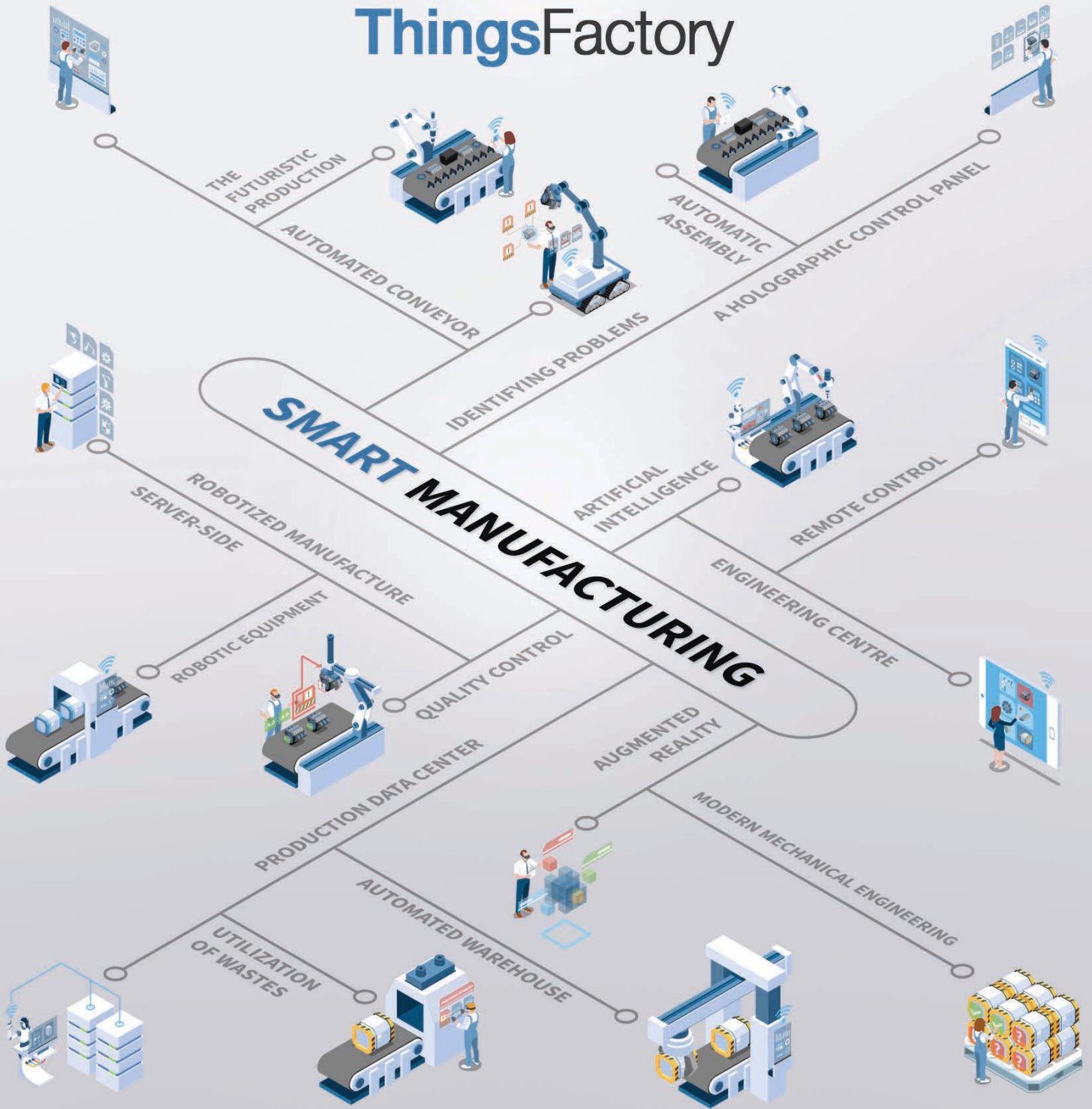




# ThingsFactory

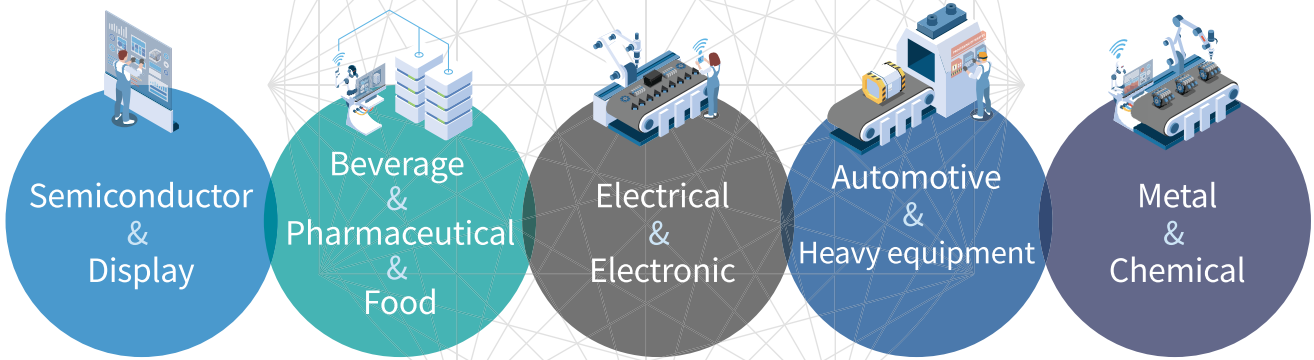


**HatioLab.**  
Never think, just enjoy

[www.hatiolab.com](http://www.hatiolab.com)



# Manufacturing Execution System ThingsFactory



**Real-time manufacturing logistics management**  
Understanding and managing ever-changing logistics status in real time



**Quick response to changing market environment**  
Perfect response to changing business situations with flexible system structure and rapid software development



**Effective management of production resources**  
Improve utilization rate by checking production resource



**Real-time monitoring of site conditions**  
Real-time monitoring of the manufacturing site, including process / robot / operation / logistics / stock status and more.

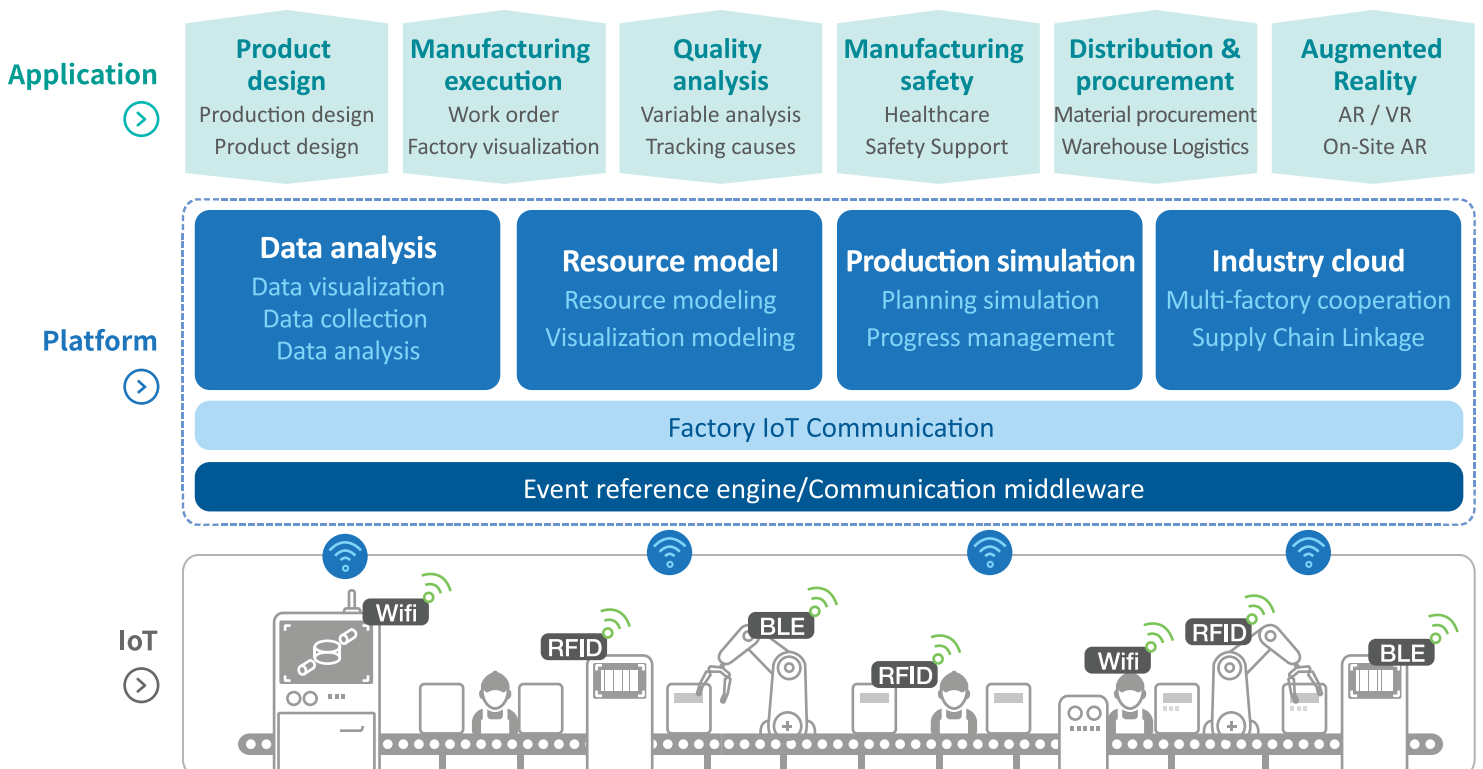


**The best quality management**  
Provide the reference data in case of a defect for analyzing the causes of the quality issues



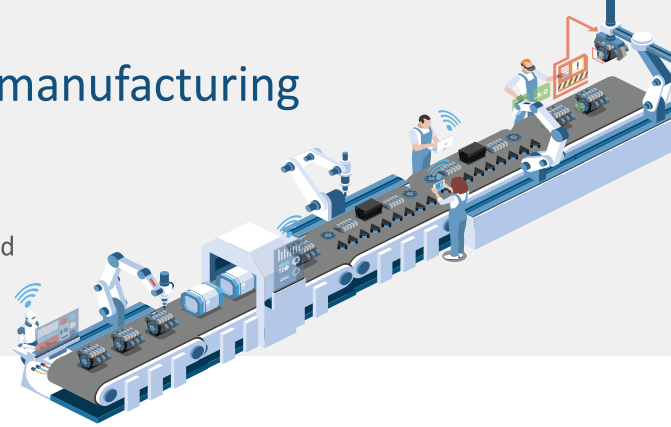
**Multi-Device Support**  
Mobile device support, such as Tablet, PDA, and wireless scanner for smart factory implementation

## Smart Factory Model



# HatioLab dreams of a better world that manufacturing innovation will bring.

Beyond the traditional way of production that was operated manually, experience better service to collect and analyze field data in real time and monitor and control the entire manufacturing process.



## Things Factory

- Smart factory building platform that can collect and share necessary information in real time such as production planning, work order, job progress, quality information
- Providing easy and convenient user environment with web-based UI, user authority by job type, and globalization support
- Flexible product configuration, short deployment period, scalability and easy maintenance make it possible to respond to customers of various sizes



## Factory Automation

- Implement an environment that can provide customers with the necessary information by collecting and analyzing data from various facilities, sensors, and robots in the field
- Provide highly flexible UI and ease of use compared to traditional HMI
- Support various protocols for data collection of on-site equipment, sensors, robots, etc.(Modbus, Socket, MQTT etc.)
- Ensure stability of data communication using proven middleware through many projects



## Dashboard & Report

- Designing customer site layouts and equipment, provides a dashboard and 3D visualization environment that can collect and analyze field information in real time
- Efficient decision support with reports that are reflected in real-time
- Compose various report screens and implement reports using complex and various types of charts

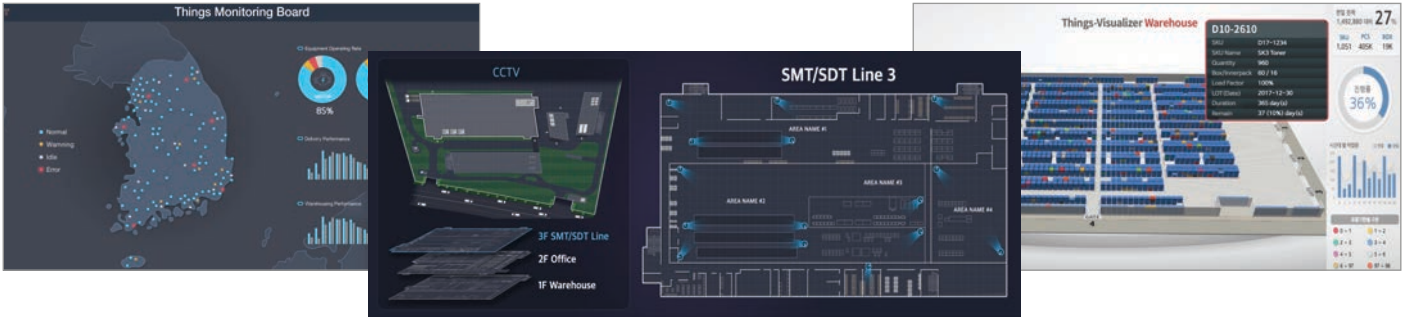


# ThingsBoard

Real-time Monitoring Solution

Any data can be easily designed and monitored in various forms.

Dashboard, KPI report, equipment / process / stock status, logistics / distribution / transportation status are designed with web standard graphic integrated modeler and real-time monitoring is possible using 2D, 3D and map based service.



# ThingsRTLS

Real-time Location System

Can be used in smart factories, logistics, construction, public facilities, event hall and more!

It can be applied to various fields such as indoor navigation(Picking, Put-away), work safety(Danger Zone Warning) and work guide, resource movement efficiency and utilization analysis, and augmented reality.

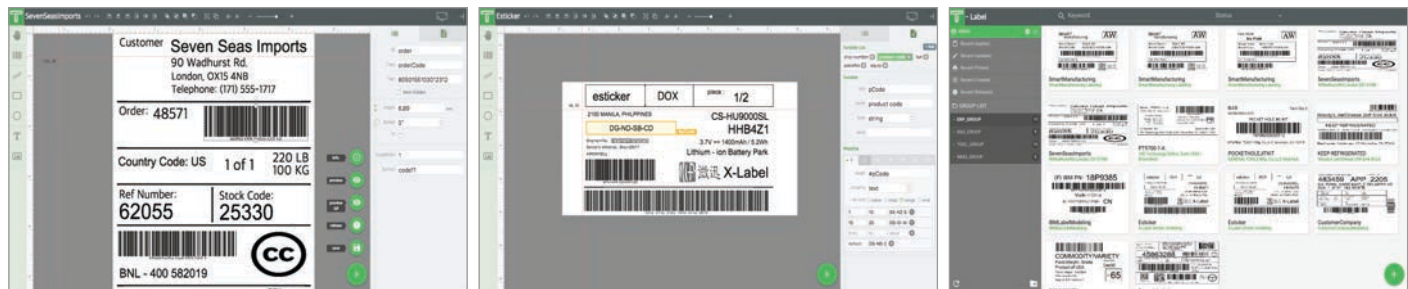


# ThingsLabel

Barcode Label Management Solution

Integrated solution for business label management!

Non-specialist can design/print barcode labels as easily as paint. It supports not only 80 types of barcodes such as code11, code39, EAN13 and QR, but also manages the entire label of the company.



714&715-ho,Gyeonggi Enterprise Growth Center, 42, Changeop-ro, Sujeong-gu, Seongnam-si, Gyeonggi-do, Korea

Tel : +82-31-605-5571 / Fax : +82-31-605-5584

Email : support@hatiolab.com