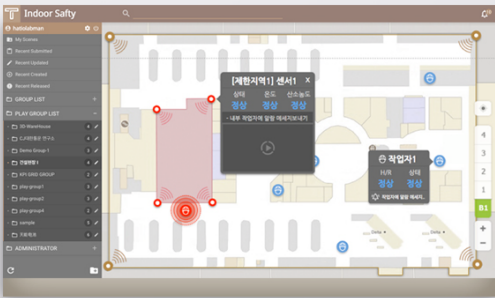
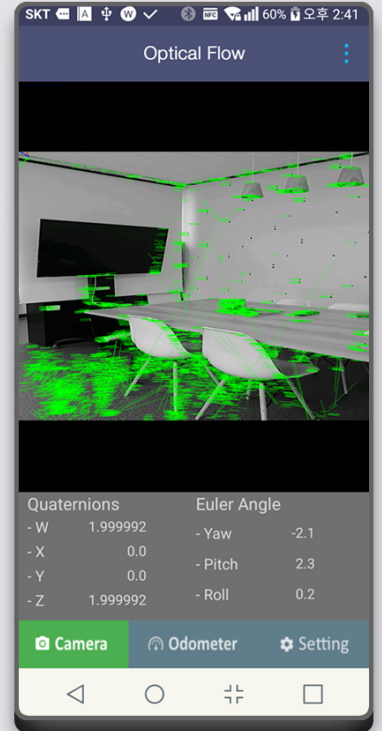
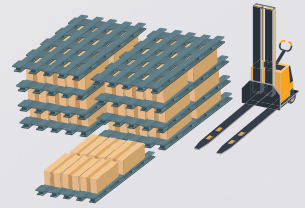
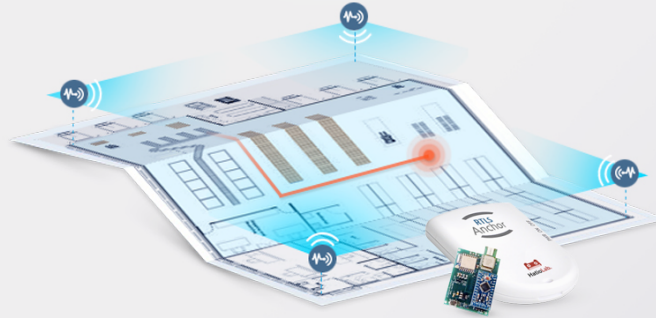
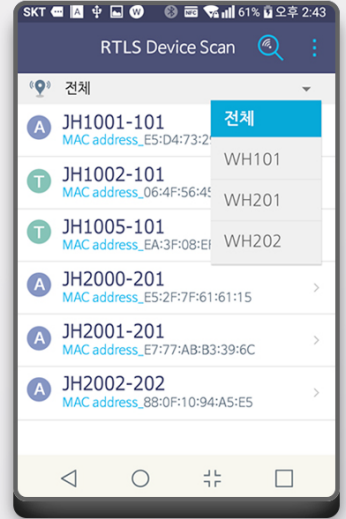


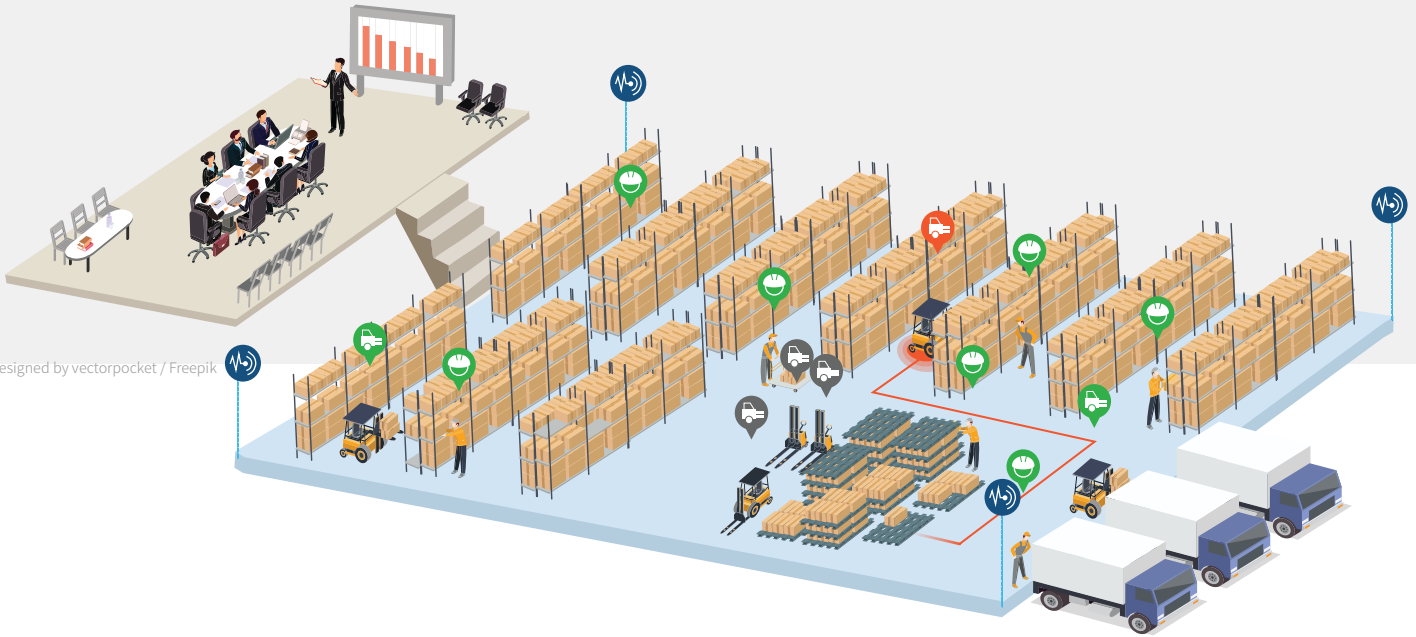
ThingsRTLS





Real-time Location System

ThingsRTLS



Designed by vectorpocket / Freepik



Excellent Indoor/Outdoor Accuracy

Seamless indoor/outdoor location tracking using wireless network (UWB, BLE), inertial sensor (IMU), GPS, and machine vision



Cost Effective Infrastructure Deployment

Enhanced RTLS technology supporting cost effective indoor/outdoor infrastructure deployment to achieve high return on investment



Resource Activity Visibility

Real-time visibility of indoor and in-motion resource activities by 3D modeling and monitoring

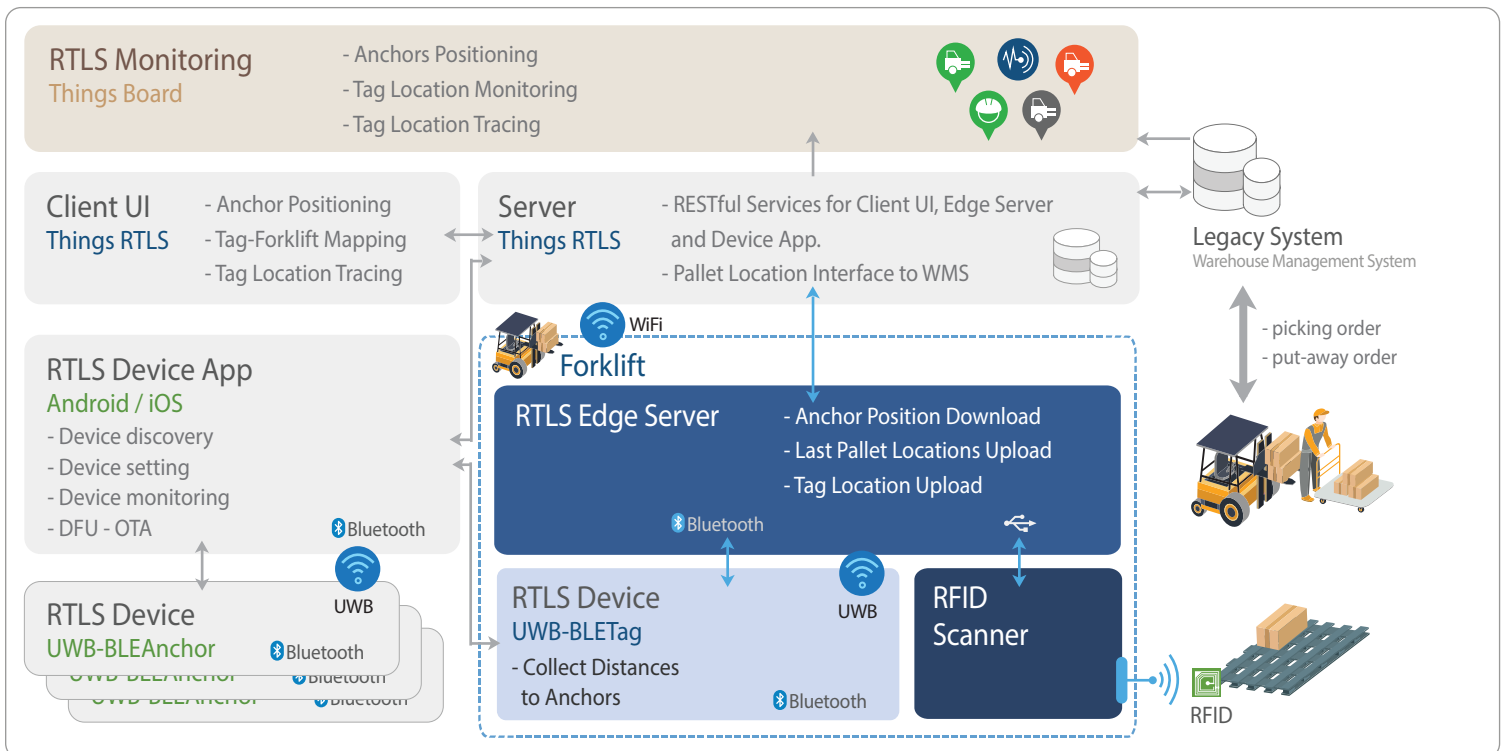


Superb System Interface Features

Flexible backend system interface features for WMS, MES, and other diverse enterprise information systems applicable to efficient path management and navigation

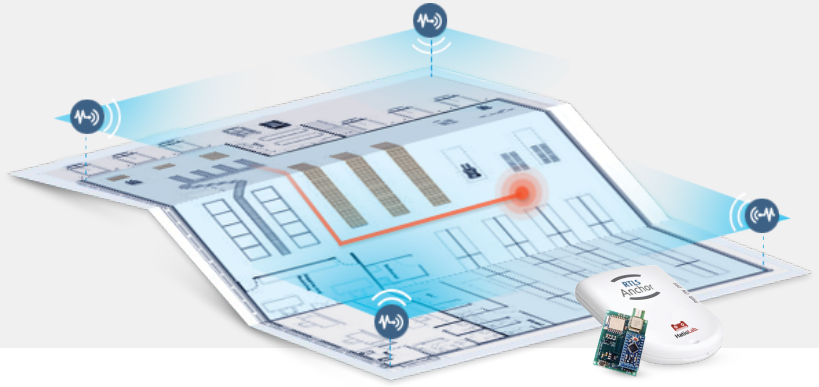
Case Study for Warehouse

(KIPO patent pending)

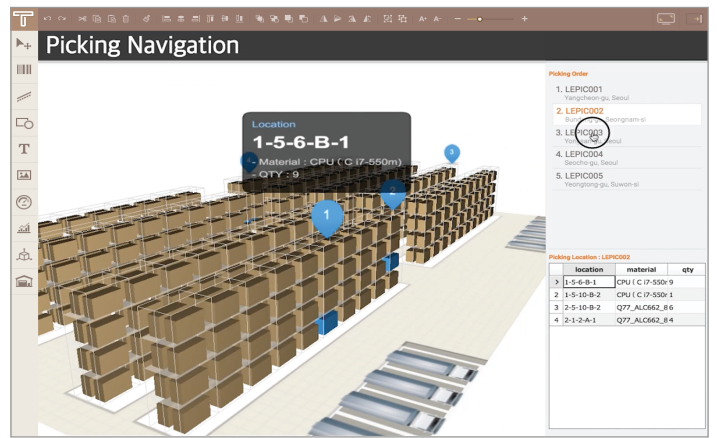
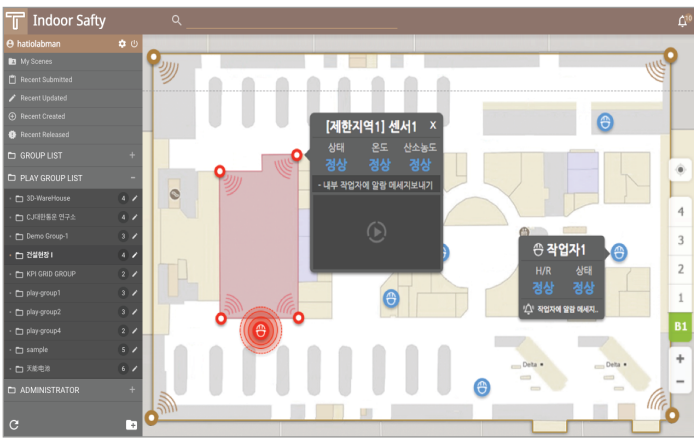
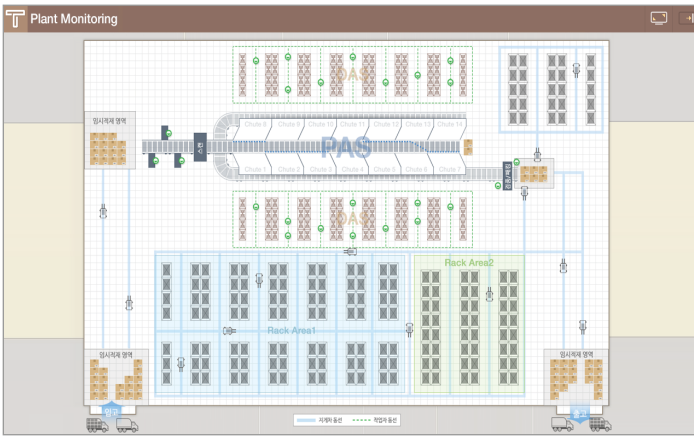


Applicable to Smart Factory, Logistics, Construction, Public, Expos and More !

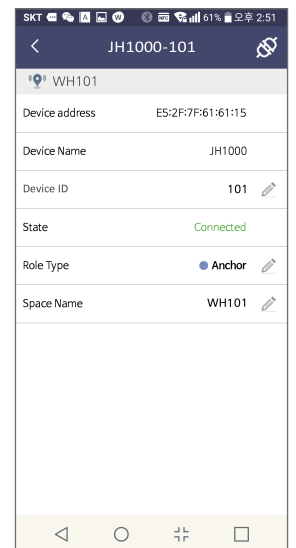
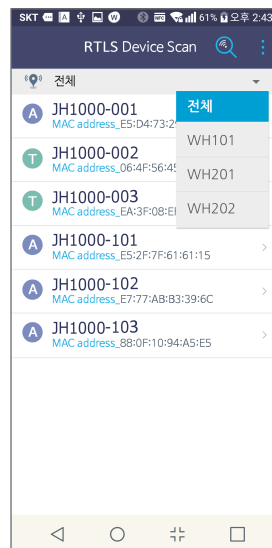
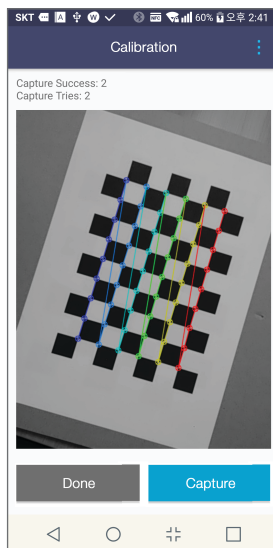
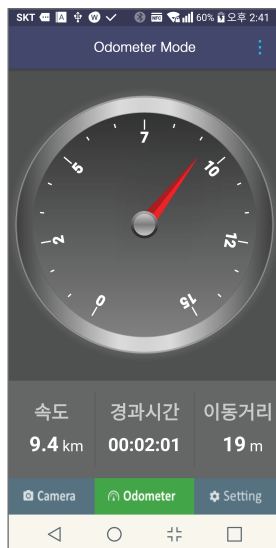
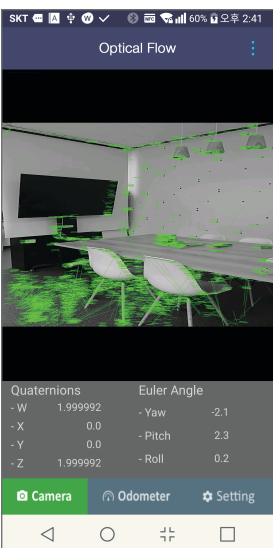
- ✓ Indoor Navigation (Picking, Put-away)
- ✓ Work Safety and Work Guide
- ✓ Resource Path & Operation Mgmt.
- ✓ Augmented Reality Applications



RTLS Monitoring Example



RTLS Device App



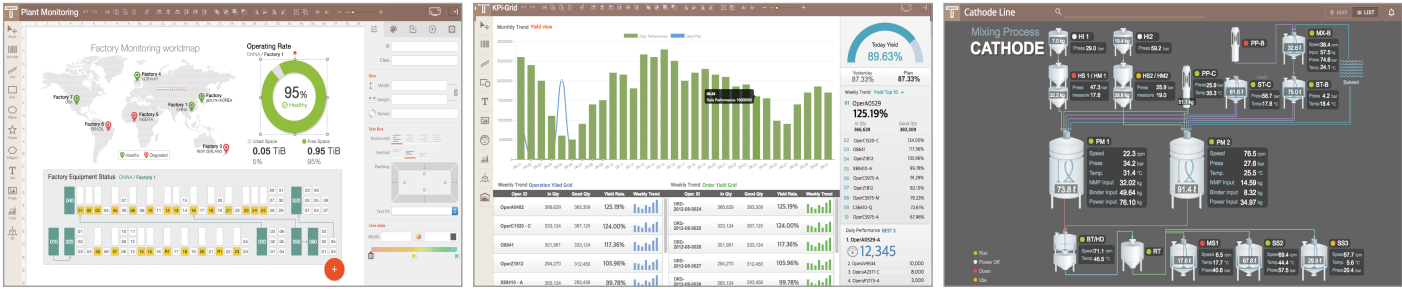


ThingsBoard

Real-time Monitoring Solution

Easy to Use, Design and Monitor Any data in Any Form

Design dashboards, KPI reports, facility, work process, stock status, as well as the logistics, distribution and transport status by the standard, integrated graphic modeler to monitor in 2D, 3D and Map basis in real-time

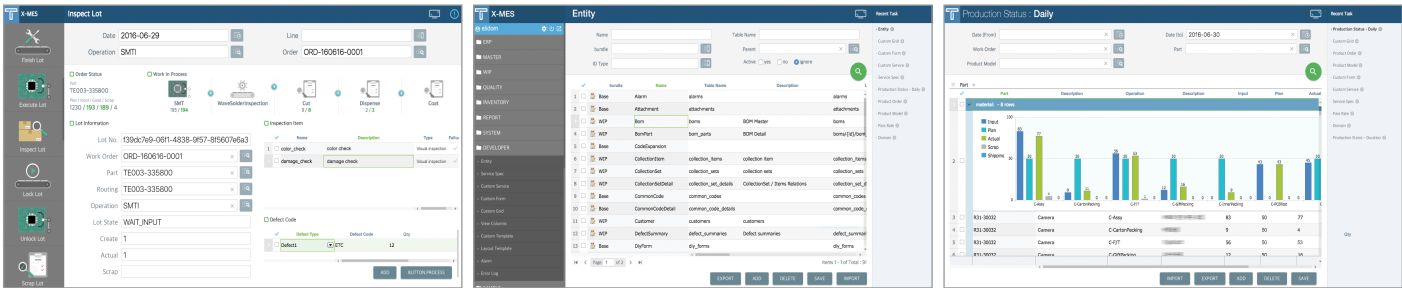


ThingsFactory

Manufacturing Execution System

A better world by Industry 4.0, manufacturing innovation.

Step out of the traditional manufacturing, and get the intelligent business services with monetizing your data by getting the real-time access and intelligent control of your entire manufacturing operation



ThingsLabel

Barcode Label Management Solution

Integrated Enterprise Label Management Solution

Easy to use solution requiring no expert to design and produce bar code labels. It supports more than 80 types bar codes including Code 11, Code 30, EAN 13, QR code and features entire enterprise label management

